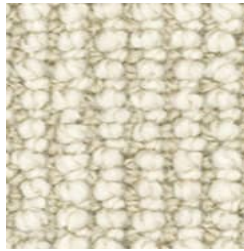
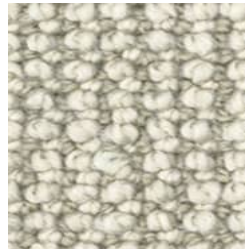


Ravine 4M



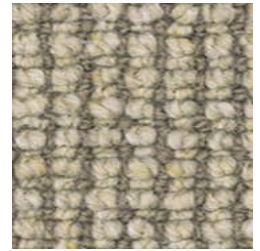
510
Oatmeal



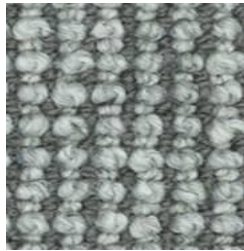
515
Crevice



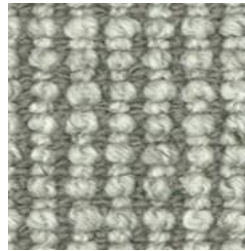
550
Cobblestone



580
Stonewall



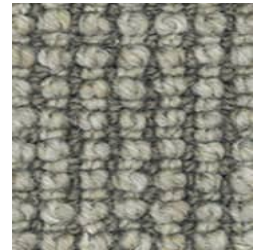
710
Smokey Ash



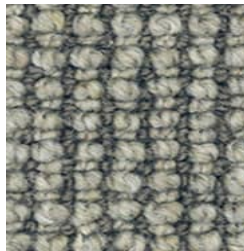
735
Fissure



750
Pewter



755
Tussock



765
Stone Haze

Ravine 4M

A stunning and versatile range of carpet for all seasons, Ravine 4M will sustain luxurious comfort all year round. This textured loop pile carpet enhances room aesthetics, creating depth and dimension. Its tactile surface adds visual interest, transforming spaces with a luxurious feel, making it a stylish and inviting choice.

Technical Data

Type:	Wool Carpet	Total Product Thickness:	10 (+/- 1.0)mm
Pile Height:	7 (+/- 1.0)mm	Yarn:	100% Wool
Gauge:	25.2/10cm (5/32nd Gauge)	Roll Width:	4.00m
Pattern Repeat:	Not Applicable	Colours:	9
Country of Origin:	New Zealand	Secondary Backing:	Jute
Installation Method:	Conventionally Laid		

Performance

Warranty:	15 Year Hycraft Limited Residential Warranty*	ACCS Rating:	Residential Extra Heavy Duty & Stairs - 6 Star Contract Medium Duty - 2 Star
------------------	---	---------------------	---

Sustainability

Declare Certification:	Declare Red List Free
Accreditation:	Manufactured under a quality and environmental system certified and complying with ISO 9001 and ISO 14001 by an accredited certification body.
Green Star:	Environmental Certification Scheme (ECS). Level 4 - Certificate #28105
Indoor Air Quality:	Green Building Council compliant for VOC emission rate limits



Godfrey Hirst Best Seller



Made in New Zealand



Residential Extra Heavy Duty & Stairs - 6 Star



Contract Medium Duty - 2 Star



ECS Level 4



15 Year Hycraft Limited Residential Warranty*



Natural Fibre



Fire Rated Carpet



Premium



Declare® Red List Free



Textured Loop Pile

Ravine 4M

All Godfrey Hirst carpets must be installed in accordance with the latest AS2455 and any relevant Godfrey Hirst Installation Instructions. ~Test results and certificates are available on request.
*This product comes with a manufacturer's warranty for new carpet installed indoors in owner occupied premises, if properly installed and maintained. This warranty is in addition to consumers' rights under the statutory consumer warranty provisions in the Australian Consumer Law, which may exceed the rights under this Warranty. The amount recoverable under the warranty decreases after five years. For full information in respect to the scope and limitations of this warranty, please refer to the full terms and conditions available from your retailer, by calling 1300 444 778, or by downloading from www.godfreyhirst.com.