

Deluxe Collection Hybrid 9mm

INSTALLATION GUIDE



CALM WALK

calmwalk.com.au

Deluxe Collection



Installation guide

Important Information

It is important to employ safe working practices and use safety protection equipment when installing flooring, such as protective eyewear and clothing, safe footwear, and respiratory protection equipment.

Please note that this is only a guide, and we always recommend that you use professional installers for our products. Installation must be done in accordance with AS/NZS 2012-1884 Floor coverings – Resilient sheets and tiles – Installation practices. Incorrect installation or preparation of the subfloor will void your warranty.

Please read through the entire Installation Guide before you begin installing your new flooring. Calmwalk does not recommend the Deluxe collection Hybrid to be considered as a DIY solution. We advise that it is only to be installed by professional installers experienced in hybrid flooring. Please note, that if Deluxe collection Hybrid is installed by a customer as DIY, the warranty will be void.

Things to be aware of

- ▶ Minimal movement can be expected after installation. Gaps or peaking may appear between boards if temperature fluctuations have occurred. The amount of movement a floor experiences is influenced by humidity, temperature, installation methods and the sub floor the product has been laid on. Some maintenance may be required to tighten up the boards after installation.
- ▶ **Subfloor:** Timber subfloors such as yellow tongue, timber planks and chipboard are more inclined to move than Masonite, Plywood, a cement based, or concrete floor. Timber subfloors expand and contract with temperature changes, and this can have a direct impact on your new hybrid installation. With a timber subfloor, we recommend laying down Masonite or ply sheeting prior to installing your new hybrid floor.
- ▶ **Temperature:** Deluxe collection Hybrid is designed to move as a whole floor. Temperature will have the biggest impact on floor movement. High temperature in summer will cause the planks to expand. In winter low temperature can cause the planks to shrink. If the floor is not able to move properly as temperatures change, gaps or peaking can appear at the weakest points in the floor. In order to combat this, ensure a 12-10mm gap is left around the perimeter of each room including doorframes, pipes, and cupboards etc, to allow movement to occur. This gap can then be covered with skirting boards or scotia.

Deluxe Collection



Installation guide

- ▶ **Large areas:** For areas that have a length or width that are over 15m (across a hallway for example), a 12-10mm expansion gap will need to be applied. This can be done in a doorway to help keep it neat providing the span from one expansion gap to the other is no more than 15m. This gap can then be covered with an expansion trim.
- ▶ **Heavy objects:** Heavy objects, such as kitchen benches, large bookshelves, pool tables, etc, will prevent the floor from moving freely. We recommend installing your kitchen or bathroom benches first and install your hybrid floor around them. We do not recommend placing heavy items on Deluxe collection Hybrid products.

Here are some useful tips to help you achieve the best finish for your floor.

- ▶ Ensure that both the room and the new planks are acclimatised to °27-18C for a period of at least 48 hours prior to installation. This temperature should be maintained prior to, during, and for at least 24 hours after the installation is completed.
- ▶ o The indoor temperature must always be above °18C and below °27C.
- ▶ Ensure that your subfloor moisture content is not above the recommended amount according to the current Building Code of Australia and/or relevant state and territory building codes.
- ▶ Ensure a 12-10mm gap is left around the outside of each room, including doorframes, pipes, cupboards etc.
- ▶ Prior to installation, determine whether you will remove old skirtings and replace them with new ones after installation. We leave the choice to reuse old/new skirting up to the installer as they are the ones onsite and best able to determine if they can reuse the skirting.
- ▶ Check all planks before and during installation (if defective planks are installed, the warranty will be void in respect to those planks).

Preparation

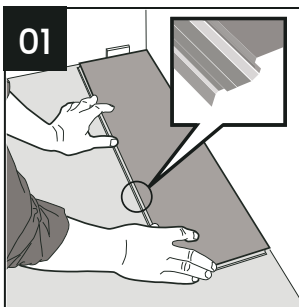
- ▶ The room that the flooring is to be installed in should be acclimatised to °27-18C for a period of at least 48 hours before installation (be maintained prior to, during and for at least 24 hours after the installation is completed).
- ▶ Take all the planks out of the box and stack them in piles of about 2 boxes high 48 hours prior to allow them to acclimatise before installation.

Installation guide

- ▶ Do not attempt installation in severe conditions if it is less than °18C or more than °27C.
- ▶ Make sure your floor is thoroughly cleaned from all contaminates (sweeping and vacuuming may be required). Do not wash the subfloor prior installation and do not expose it to water.
- ▶ Ensure the subfloor is dry, flat, even, firmly fixed, stable, clean, and free from debris, nails, grease, old adhesives, and any chemical substances.
- ▶ All substrates need to be level before laying the flooring otherwise you can encounter imperfections in the floor that maybe present during and after the installation. Deviations in the subfloor level must not be greater than 2mm under a 3 meters straight edge.
- ▶ Repair any damaged areas, holes, gaps, raised edges, and indentations by using a compound or anything recommended by your specialist. The floor will need to be level throughout the area that will be covered with the new flooring.
- ▶ Remove any carpet, cushion vinyl, floating laminate, needle felt, parquet and the like.

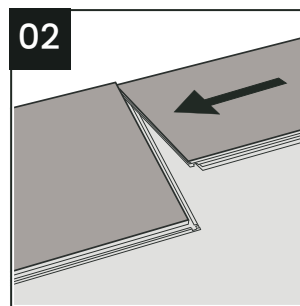
INSTALLATION

Installation of 5G Click systems



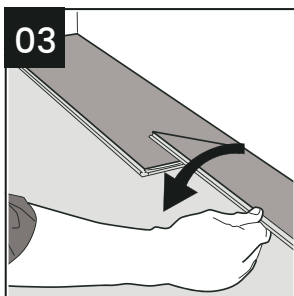
* First plank, first row

Place a spacer with predicted thickness to the left and position the panel against the wall. Later, after 3 rows, you can easily position the flooring against the front wall with predicted spacers.

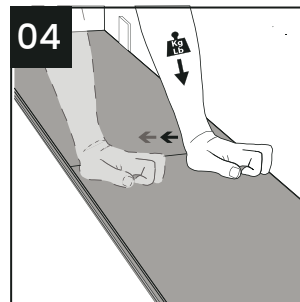


Second plank, first row

Place this panel gently close to the short end of the first one.



When folding down it is important to start from the corner closest to the previous row, folding down towards the center, and continue towards the opposite long side. During the fold down, make sure the panels are close to each other.

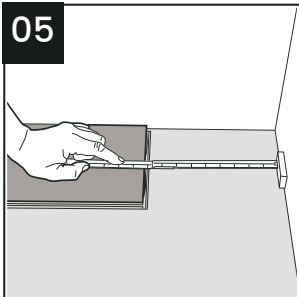


Afterwards press slightly along the short end just installed.

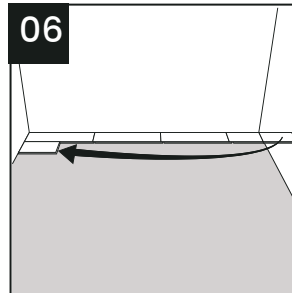
Deluxe Collection



Installation guide

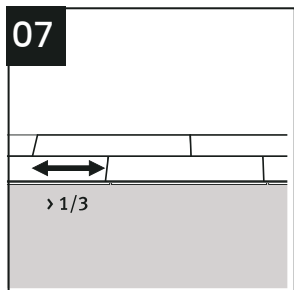


At the end of the first row, put a spacer to the wall and measure the length of the last plank to fit

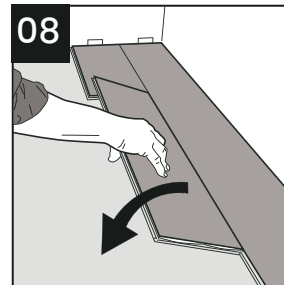


Second row

First plank min length 400 mm. Put a spacer against the left wall.

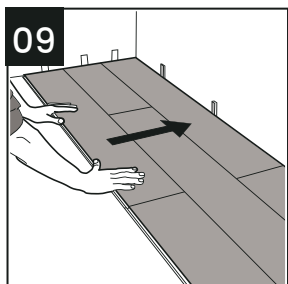


Staggered joint distance i.e. minimum distance between short ends of panels in parallel rows shall not be less than the given length.



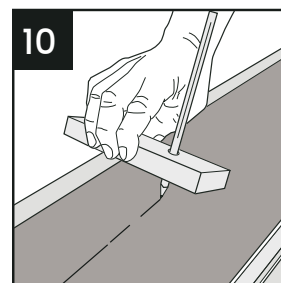
Second plank second row

Place the panel gently and close to the short end of the previous panel and fold it down in a single action movement.



After 3-2 rows

Adjust the distance to the front wall by placing spacers



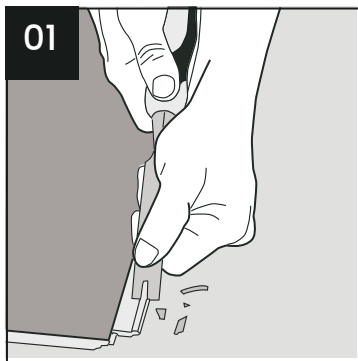
Last row (and perhaps also first row)

Minimum width 50 mm. Place a spacer to the wall before measuring. Make a simple drawing tool (piece of wood with a hole) and mark the panel along the wall. Cut the panels lengthwise including the flexible tongues.

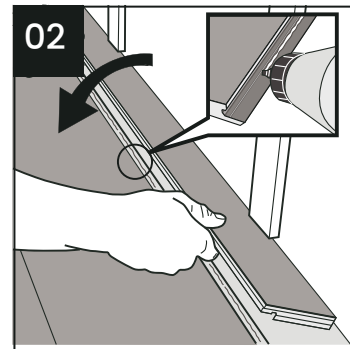
If the product needs to be removed the floor should be raised carefully to approximately 30 degrees and then slid outwards along the locking system. The product must not be pulled upwards as this will potentially damage the locking system.

Installation guide

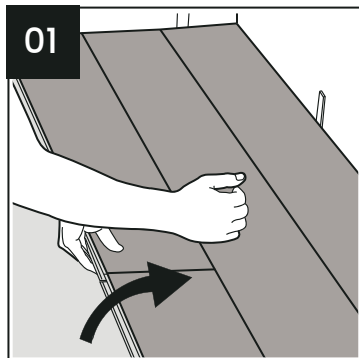
When angling is not possible



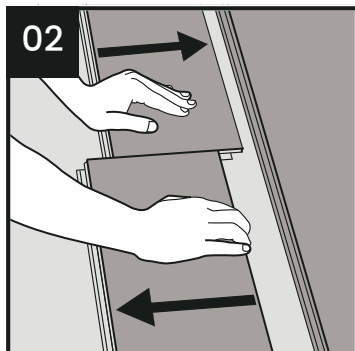
Remove the vertical locking part of the strip with a chisel, put applicable glue on the strip and push the planks horizontally together. Place some spacers between last board and the wall



Dismantling panels



Separate the whole row by carefully lifting up and release the whole row. Fold up the row and release the whole long side.



Disassemble the panels by sliding the short ends horizontally.

Never fold up a panel, as this damage the profile