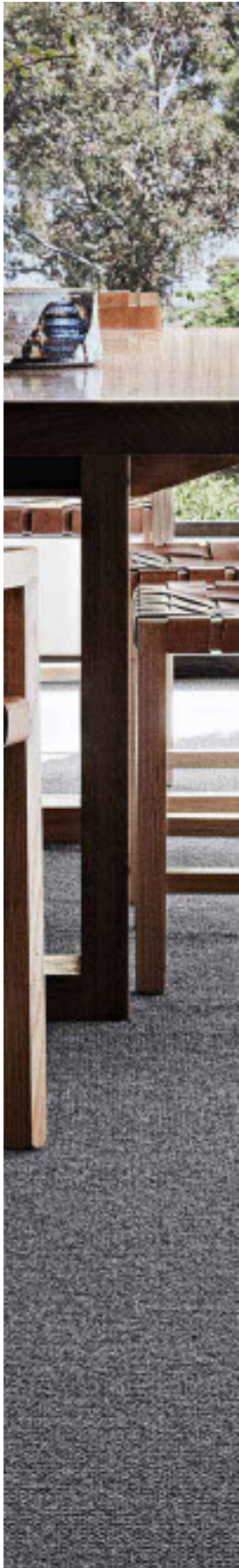


Carramar 4M



505
Sea Pearl



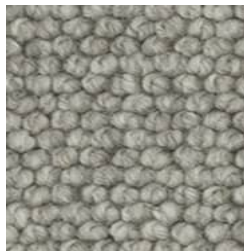
536
Coastal Dune



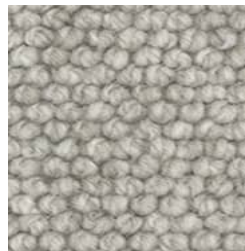
550
Buckwheat



710
Avalanche



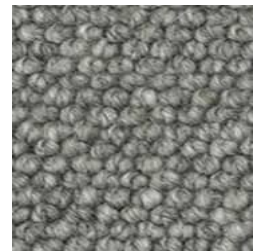
725
Oyster Shell



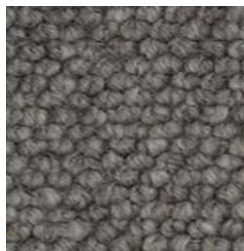
735
Dove Grey



740
Winter Mist



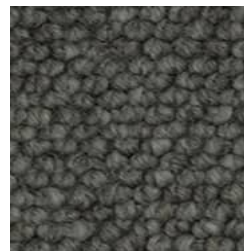
745
Evening Grey



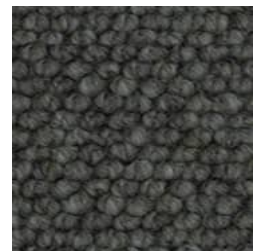
750
Coal Ash



765
Aged Pewter



770
Mulch



795
Industrial Grey

Carramar 4M

This luxury designer wool carpet delivers a superb modern foundation for contemporary styling. Crafted from beautiful wool, this 4 metre wide close textured level loop is available in a selection of sophisticated neutrals, Carramar delivers on incredible durability and perfect style.

Technical Data

Type:	Wool Carpet	Style:	Level Loop Pile
Total Product Thickness:	10 (+/- 1.0)mm	Pile Height:	7 (+/- 1.0)mm
Yarn:	100% Wool	Gauge:	15.7/10cm (1/4th Gauge)
Roll Width:	4.00m	Pattern Repeat:	Not Applicable
Colours:	12	Country of Origin:	New Zealand
Secondary Backing:	Jute	Installation Method:	Conventionally Laid

Performance

Warranty:	15 Year Hycraft Limited Residential Warranty*	ACCS Rating:	Residential Extra Heavy Duty & Stairs - 6 Star Contract Medium Duty - 2 Star
------------------	---	---------------------	---

Sustainability

Declare Certification:	Declare Red List Free
Accreditation:	Manufactured under a quality and environmental system certified and complying with ISO 9001 and ISO 14001 by an accredited certification body.
Green Star:	Environmental Certification Scheme (ECS). Level 4 Maximum Points - Certificate #10256
Indoor Air Quality:	Green Building Council Compliant for VOC emission rate limits



Godfrey Hirst Best Seller



Made in New Zealand



Residential Extra Heavy Duty & Stairs - 6 Star



Contract Medium Duty - 2 Star



ECS Level 4



15 Year Hycraft Limited Residential Warranty*



Natural Fibre



Fire Rated Carpet



Level Loop Pile



Mid Range



Declare® Red List Free

Carramar 4M

All Godfrey Hirst carpets must be installed in accordance with the latest AS2455 and any relevant Godfrey Hirst Installation Instructions. ~Test results and certificates are available on request.
*This product comes with a manufacturer's warranty for new carpet installed indoors in owner occupied premises, if properly installed and maintained. This warranty is in addition to consumers' rights under the statutory consumer warranty provisions in the Australian Consumer Law, which may exceed the rights under this Warranty. The amount recoverable under the warranty decreases after five years. For full information in respect to the scope and limitations of this warranty, please refer to the full terms and conditions available from your retailer, by calling 1300 444 778, or by downloading from www.godfreyhirst.com.